

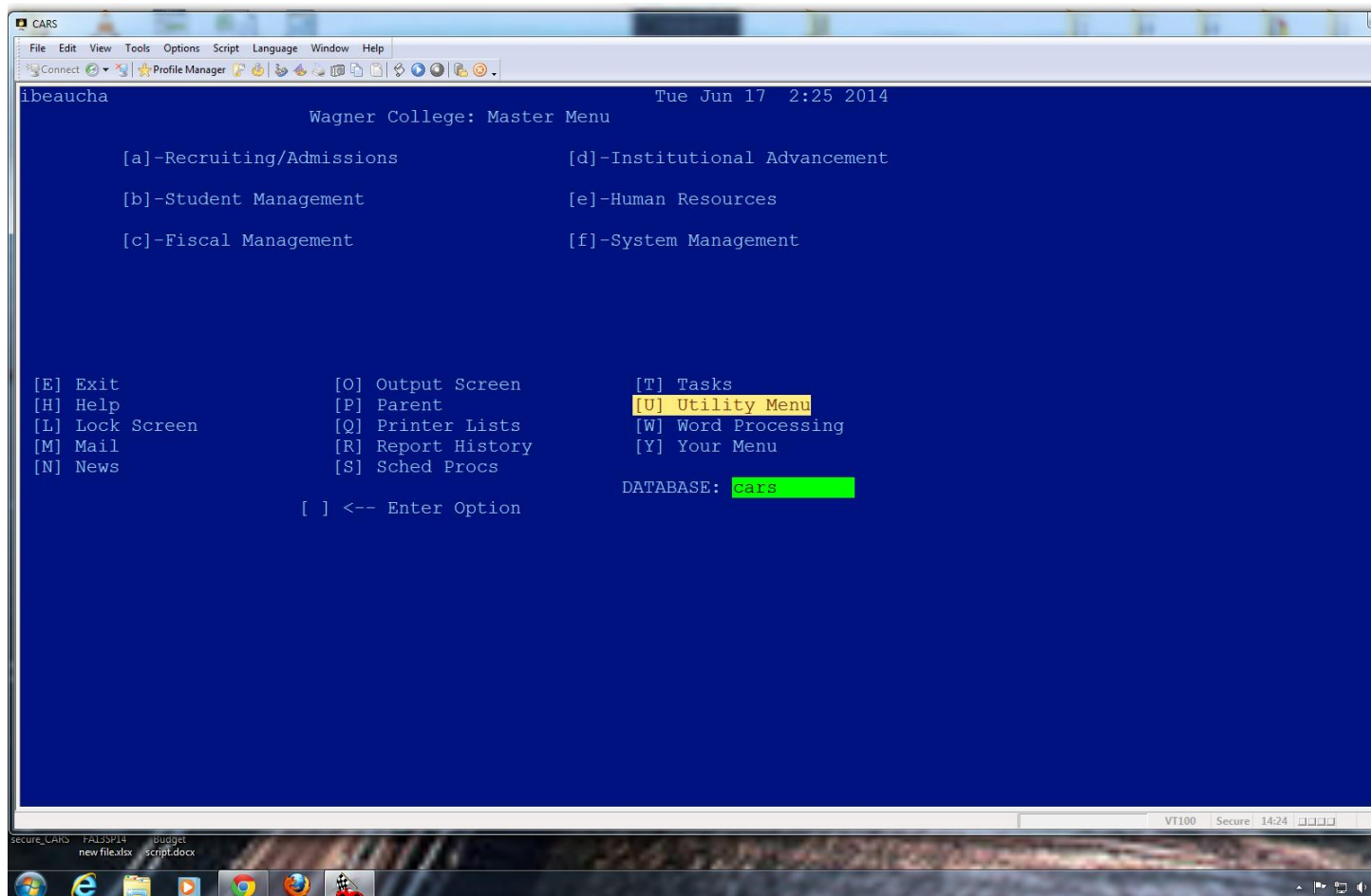


Change Password in CX

Introduction:

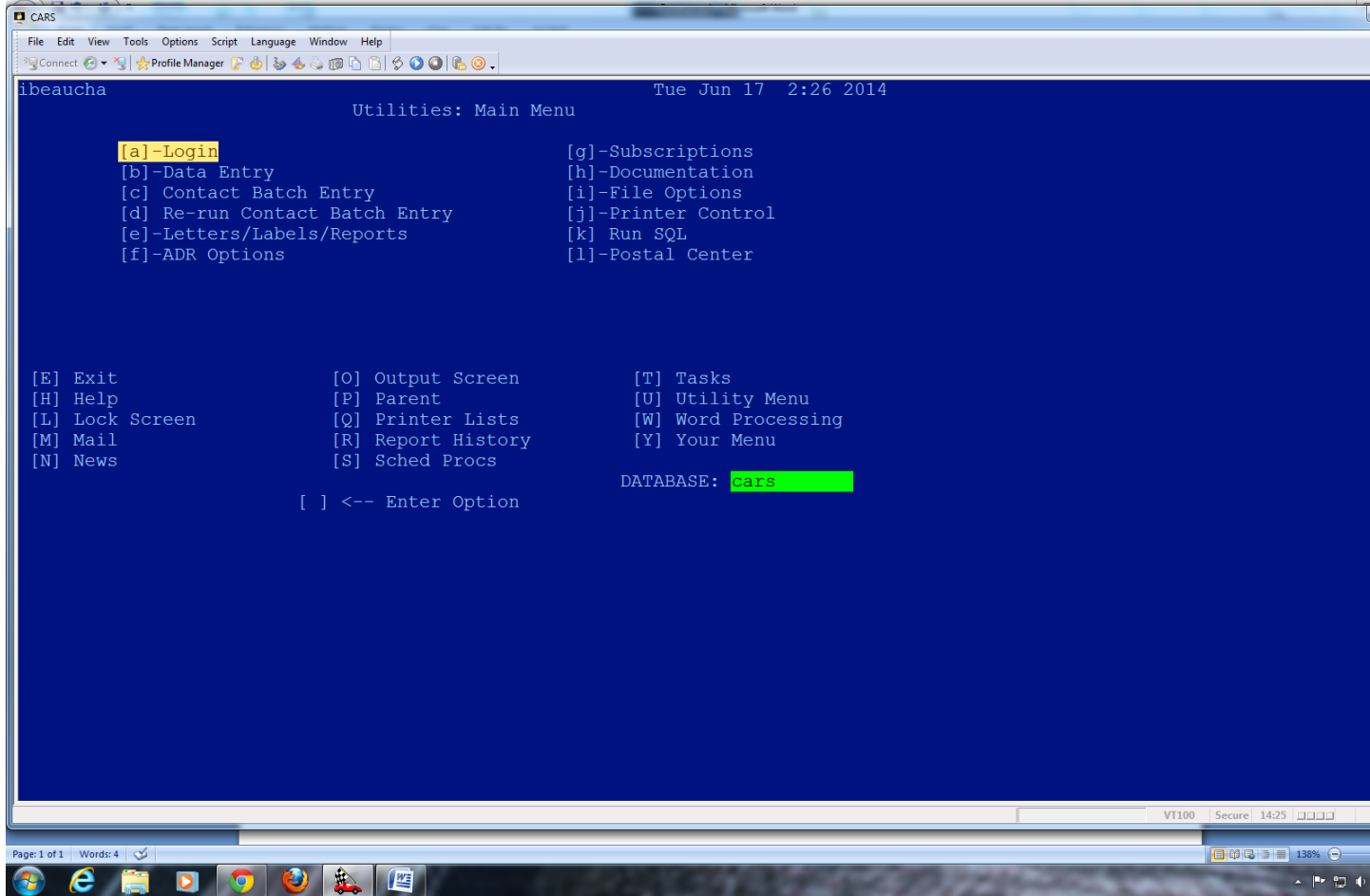
This document will describe step by step how to change your CX password (terminal based screen).

Step 1



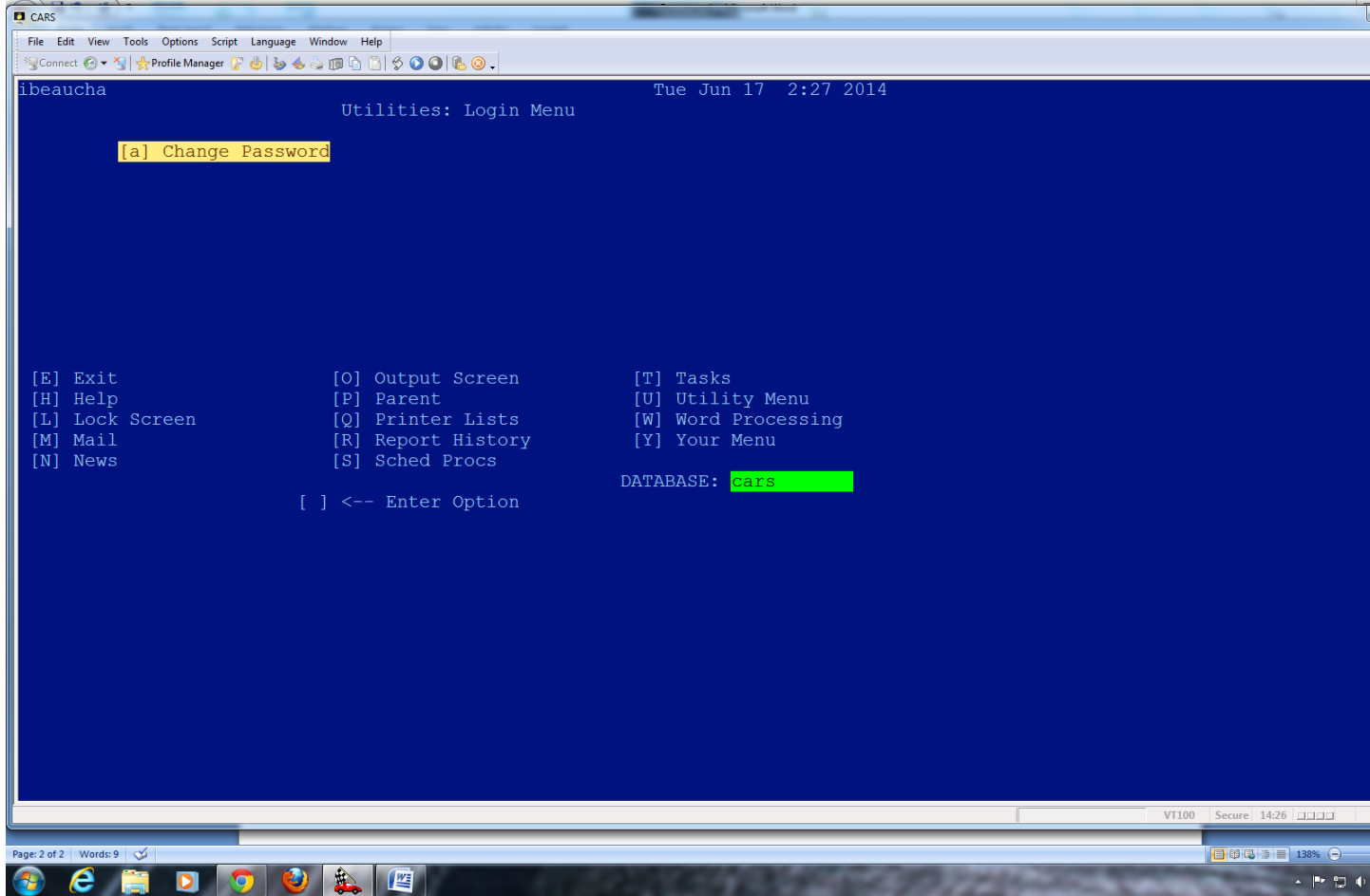
Click [U] Utility Menu

Step 2



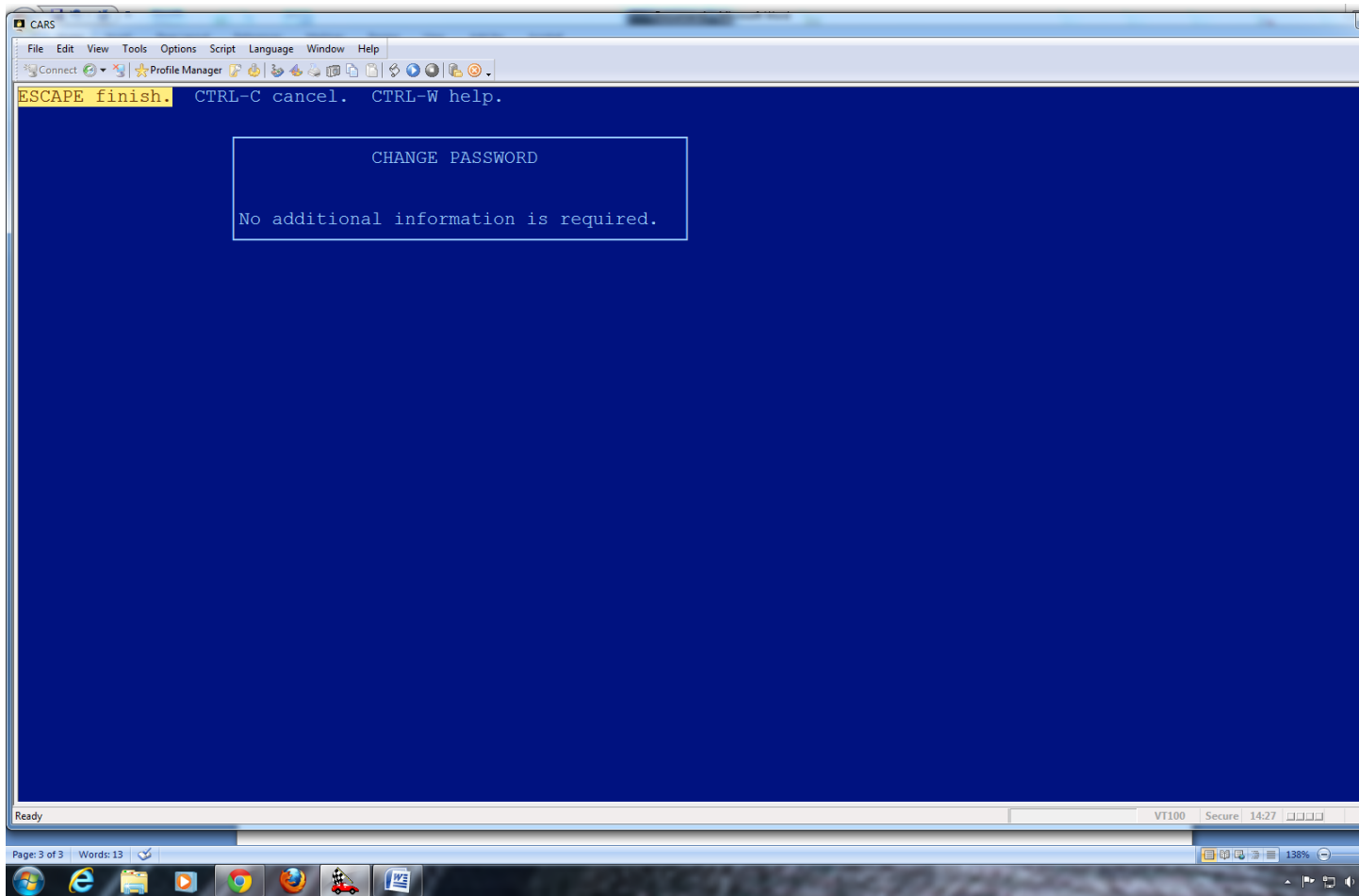
Click option [a] – Login

Step 3



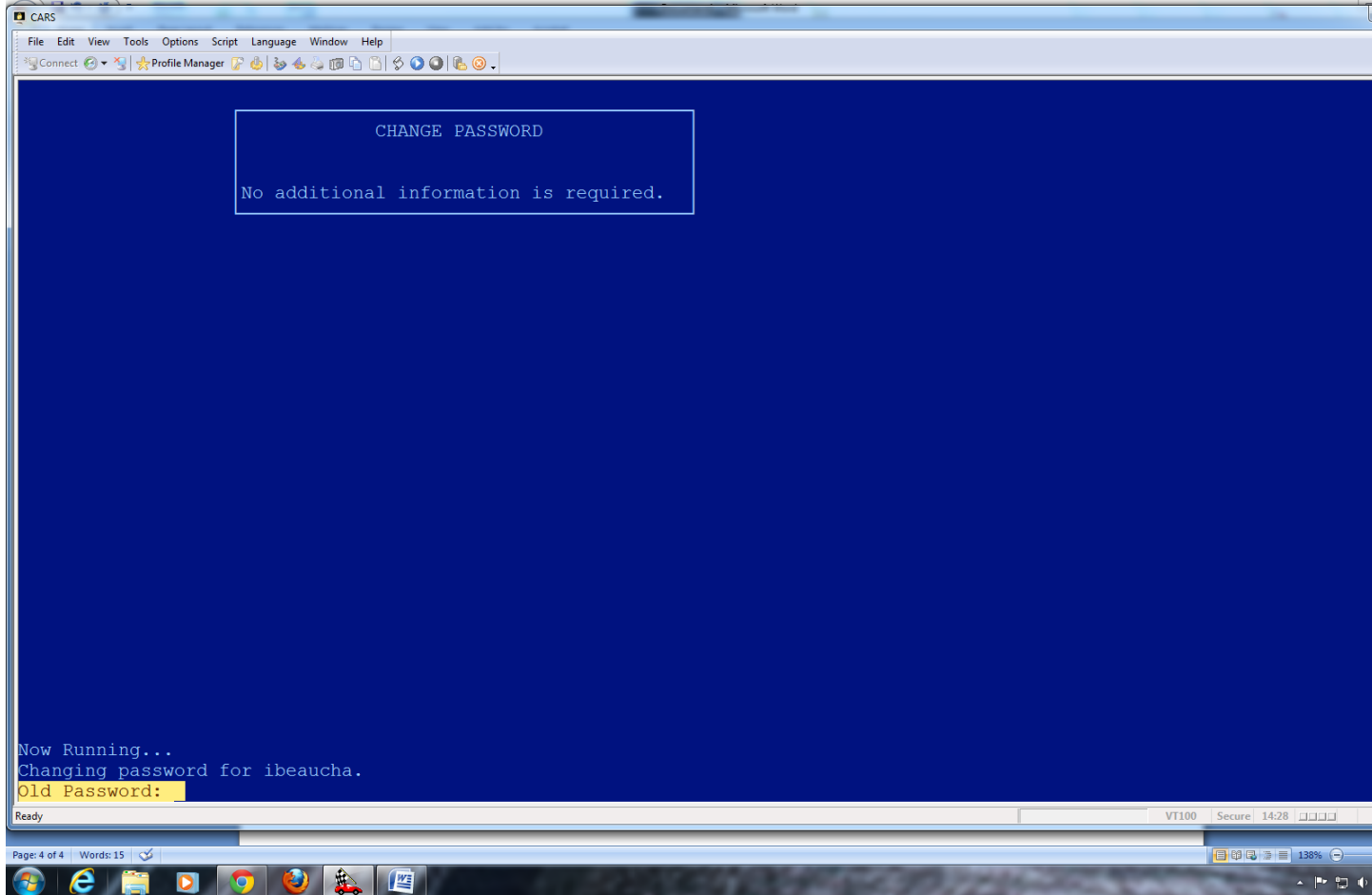
Click option [a] Change Password

Step 4



Click [ESC]

Step 5



Enter “Old Password” (current password)

Hit enter

Enter “New Password”

Hit enter

Re-enter “New Password”

Hit enter

NOTE-----

Passwords must be at least 8 characters and MUST include at least

1 numeral

1 uppercase letter

1 lowercase letter

1 non alphanumeric symbol(@ # & + - =)