



STATEN ISLAND ADVANCE/IRVING SILVERSTEIN

Wagner College's Main Hall is hidden by scaffolding as the renovation project proceeds.

TOP THIS!

Wagner College's iconic Main Hall gets a new dome

Renovation project also includes a new bay window for the school's centerpiece

By **MICHAEL W. DOMINOWSKI**
STATEN ISLAND ADVANCE

In a closely choreographed bit of logistics, a new tower dome and bay window were delivered yesterday to Wagner College on Grymes Hill. The tower and window are part of a major renovation of the historic college's Main Hall.

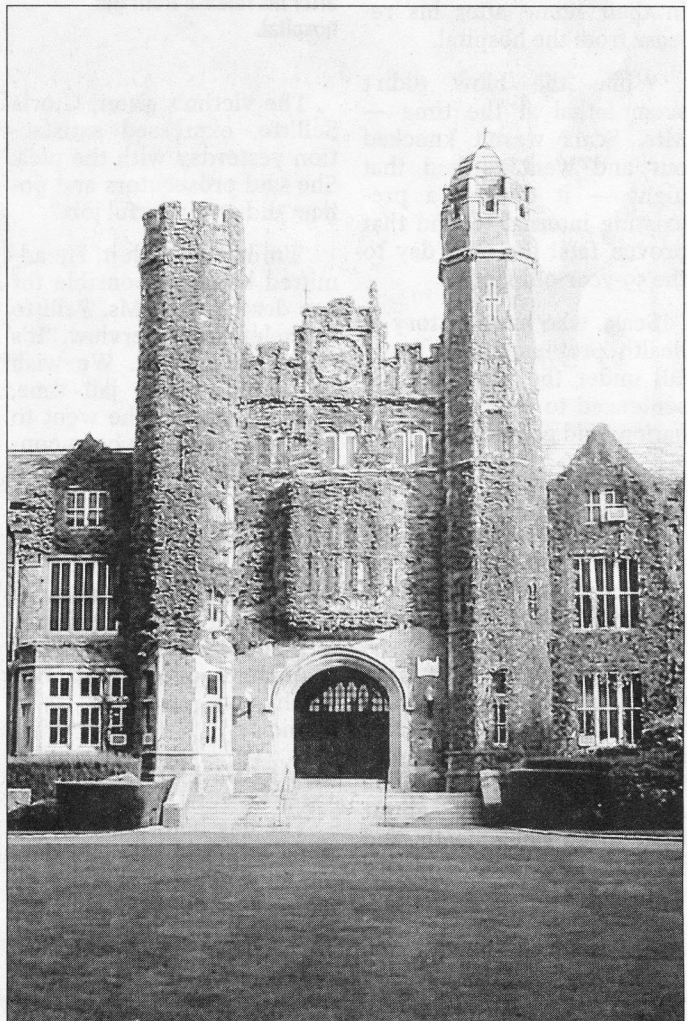
Howard Avenue was briefly blocked while the components were hauled on to the campus Oval. There they were transferred to a smaller truck and taken to the front of the iconic struc-

ture where a crane hoisted them into place.

The replacement window will be mounted between the building's two distinctive towers. The south tower's deteriorated concrete dome, now removed, will be replaced by the new one. Both the dome and the window assembly are fabricated of fiberglass.

Designed by architect George W. Conable, the collegiate gothic Wagner College Main Hall is the centerpiece of the school's 105-acre hilltop campus; it was dedicated on Feb. 28, 1930, after 20 months of construction, and first served as the school's administration building.

Michael W. Dominowski is the editor of Perspective, the Sunday Advance editorial section.



STATEN ISLAND ADVANCE PHOTO

Wagner College Main Hall is was dedicated on Feb. 28, 1930, after 20 months of construction, and first served as the school's administration building.