

WAGNER COLLEGE

Building Fire Warden Training

Today's Objective

To inform Building Fire Wardens
of their responsibilities in directing and
completing emergency evacuations

Topics for Today

- Fire Warden's area of responsibility
- Preparing for an emergency
- Actions to take if you're told of a fire or the fire alarm sounds
- Evacuation routes
- Fire Extinguisher Training
- Question and Answer Session





Actions to be taken:

If you're told of a fire or
The fire alarm sounds

- Treat every alarm as though it is a real emergency, even if the initial source is unknown.
- If the alarm sounds, floor wardens should immediately begin the evacuation of the floor.

GRAB THESE



- ACTIVATE
- RESCUE
- CONTAIN
- EVACUATE



Pull the Pull Box

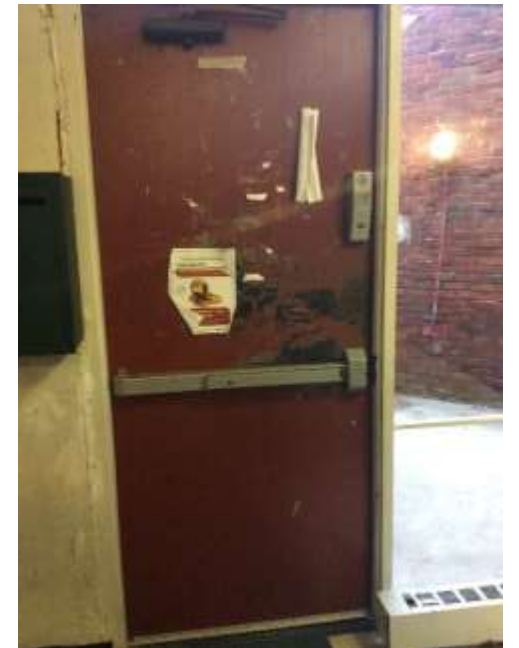


- Anyone discovering a fire should call 911 from a safe location. It's important for employees calling 911 to be able to give the following information: nature of the problem, location, address, nearest cross street, any specifics known. The caller should not hang up until told to do so by the emergency operator.
- Any delay will allow a fire to grow and further endanger the building occupants and property.

**KNOW
YOUR
EXIT**



**TOUCH
THE
DOOR**



- Assist one another with:
- The evacuation process
- Look for individuals requiring supervision or special assistance
- Practicing emergency evacuation [drill] as though it's for real
- Ensure mobility impaired personnel are evacuated to the nearest emergency stair and left with adequate supervision



- Fight the fire **ONLY IF NECESSARY** to safely evacuate employees!



- "ALL CLEAR" signal allowing people back into the building can be given by ONLY:
- Fire Department
- Public Safety

Types of Fires:

Class A:

Ordinary combustibles such as wood, cloth and paper.

Class B:

Flammable liquids such as gasoline, oil, and oil-based paint

Class C:

Energized electrical equipment-including wire, fuse boxes, circuit breakers and appliances



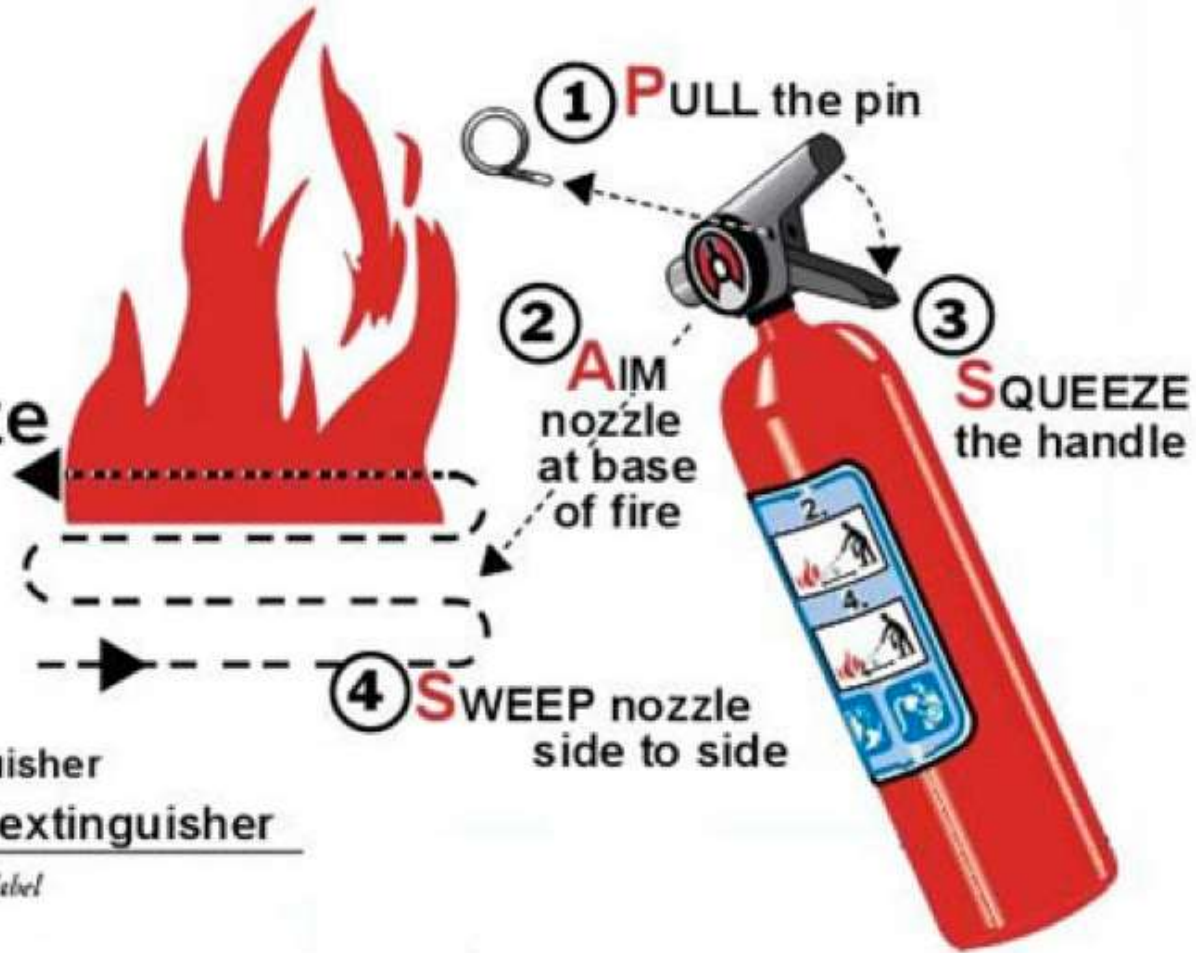
To operate an extinguisher:

Pull

Aim

Squeeze

Sweep



Know your extinguisher

Use the correct extinguisher

*(Check your own extinguisher's label
for detailed instructions.)*

Report Safety Deficiencies IMMEDIATELY!



UNION BUILDING EVACUATION



- Fire Exit (by President's Office) – Secretary has key:
leads down to cafeteria.

- Detex Door (near President's Office) :
leads out to roof.

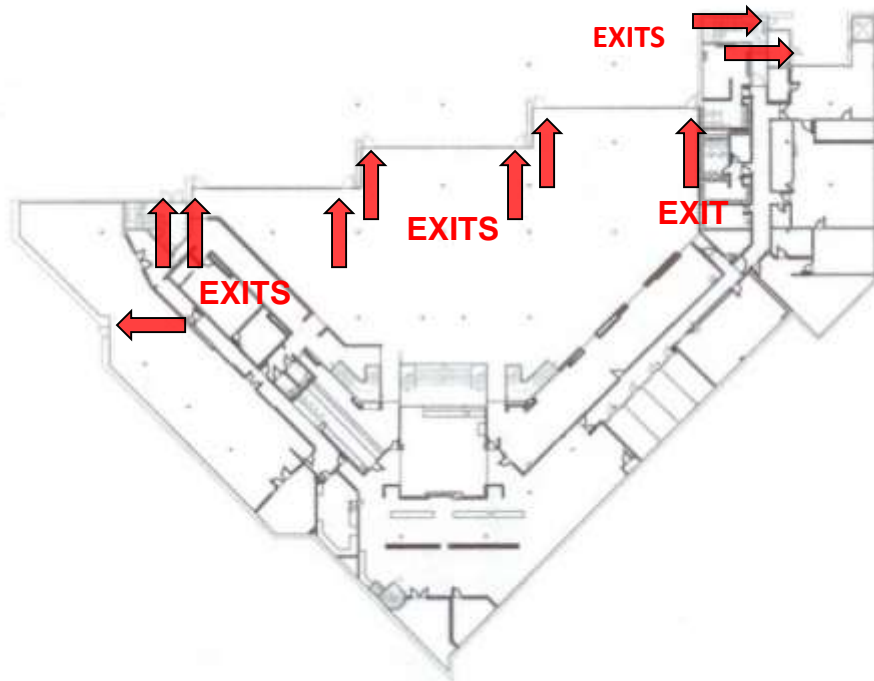
- Detex Door (top of 4th Floor Landing):
leads out to roof.

There are no fire escapes available from roof

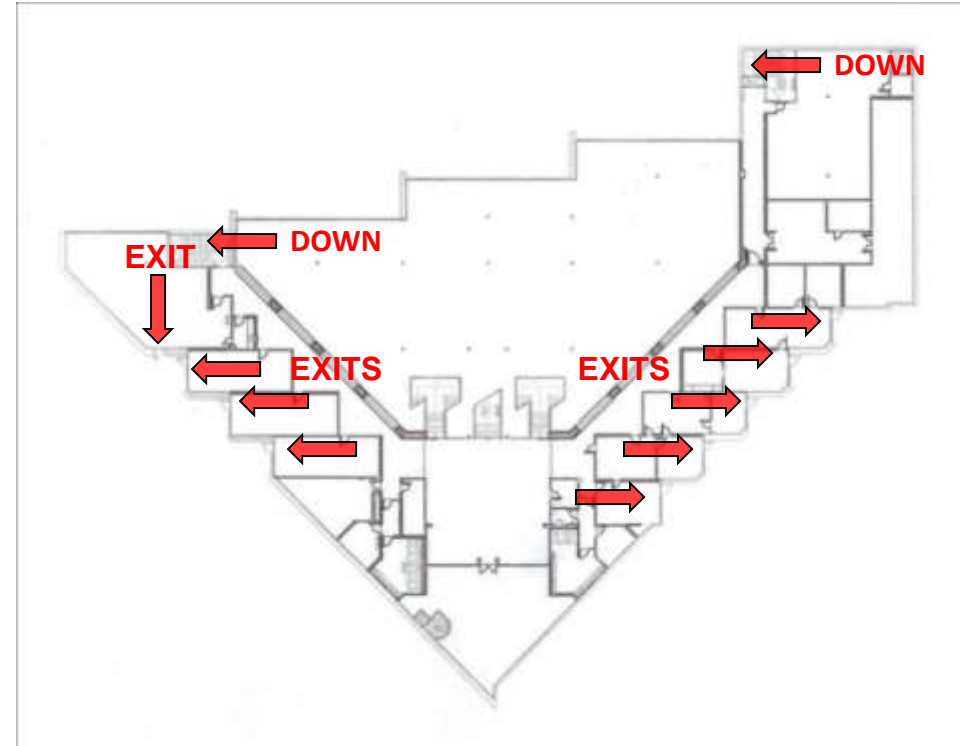
- *If available, a ladder must be dropped to facilitate escape, **or***
- *Wait for NYFD ladder rescue*

- Glass Exit Doors (front of Union):
leads to Union Patio. Glass doors can be manually pushed open if power is unavailable.

UNION BUILDING EXITS

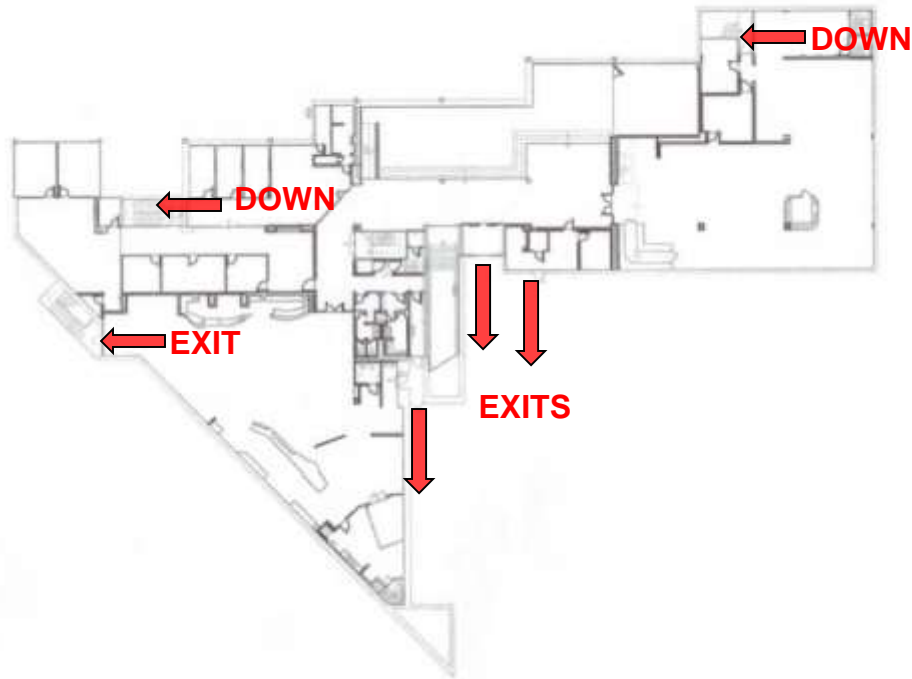


FIRST FLOOR

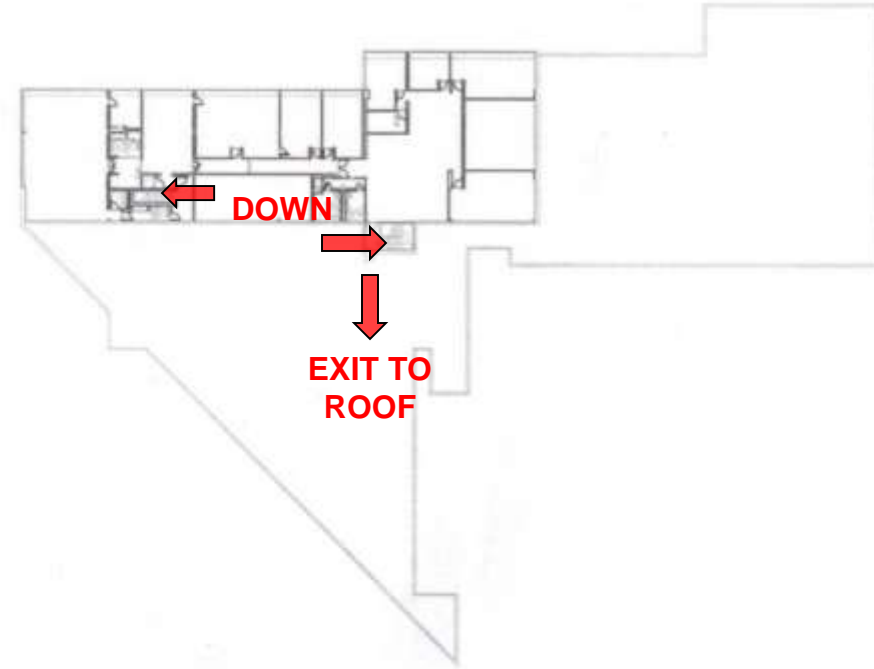


SECOND FLOOR

UNION BUILDING EXITS



THIRD FLOOR



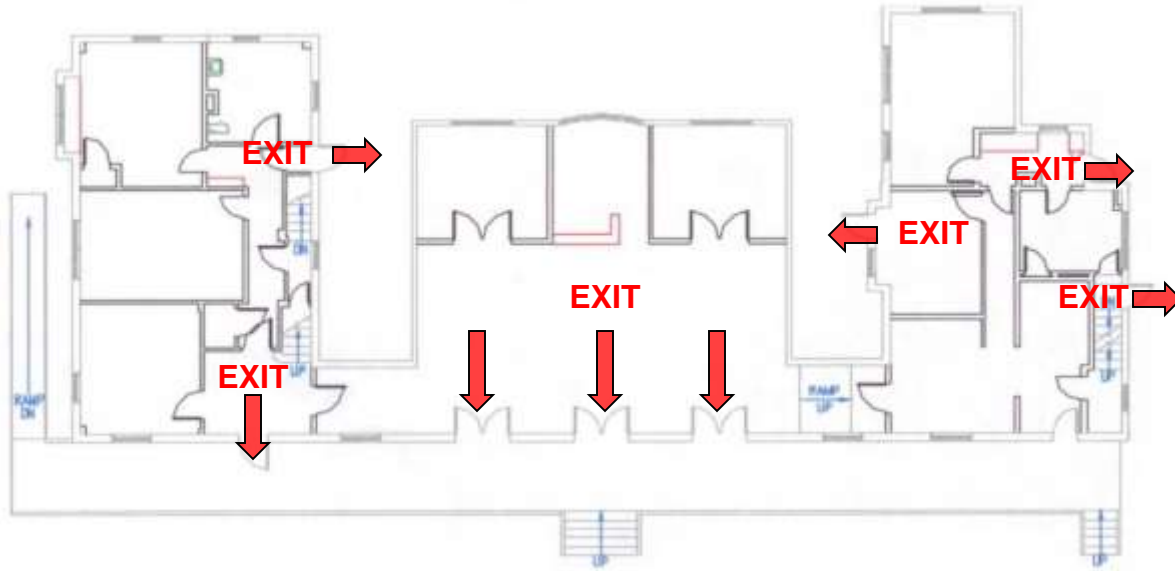
FOURTH FLOOR

PAPE HOUSE EVACUATION



- First Floor (bathroom side) – exit doors next to bathrooms, also exit door available near kitchen area.
- Vice President's Office – exit out of kitchen area to side of building. Secretary has own exit inside her office out to Pape Lot.
- First Floor - Exit through Main doors out of building or exit out doors at either end of first floor leading to outside of building.
- Second Floor – exit out of building using staircase to outside of building. May also exit down stairs and leave building through Main Lobby doors. If available, a ladder may be dropped to facilitate escape.

PAPE HOUSE EXITS



FIRST FLOOR

SECOND FLOOR

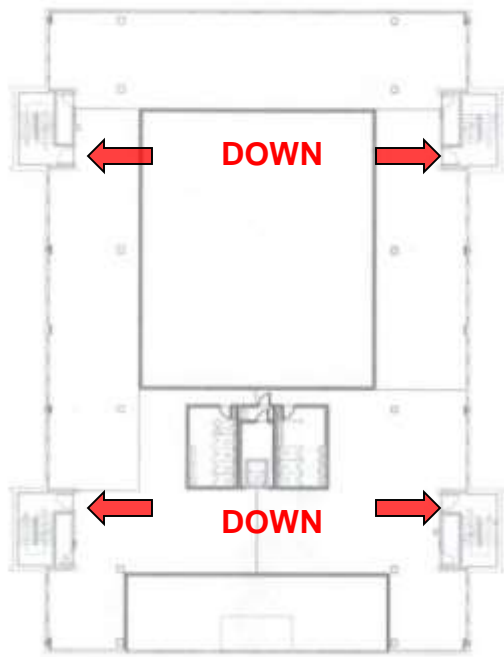


HORRMANN LIBRARY EVACUATION

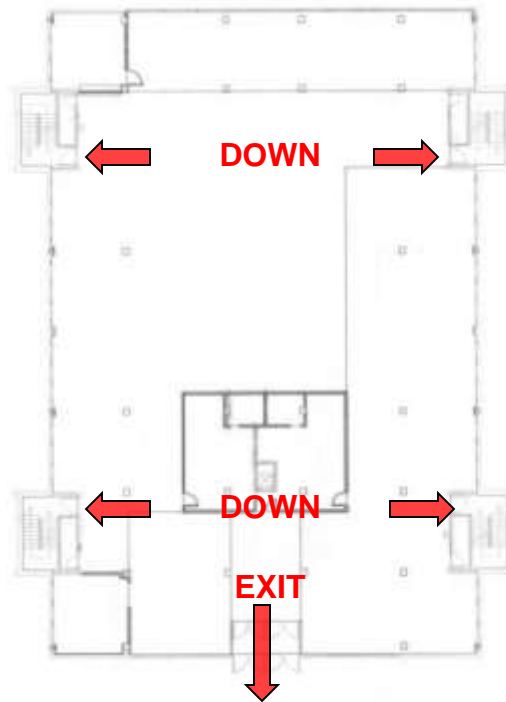


- Use rear stairwells on either side and exit out detex doors.
- Second Floor – use stairwells to exit out of building.
- Lower Level – use front stairwells down to basement that lead out to detex doors.
- Lower Level Study Center – exit out detex doors on either end.
- Study Center – has its own detex doors.
- Smart Lab – has own separate detex doors.
- Lobby – has detex/pushbar doors that exit toward Union Building.
- Cataloging/Acquisition Depts. – have separate exit doors out to Trautman Square.
- Media Services/Help Desk – exit through Main glass entrance doors.

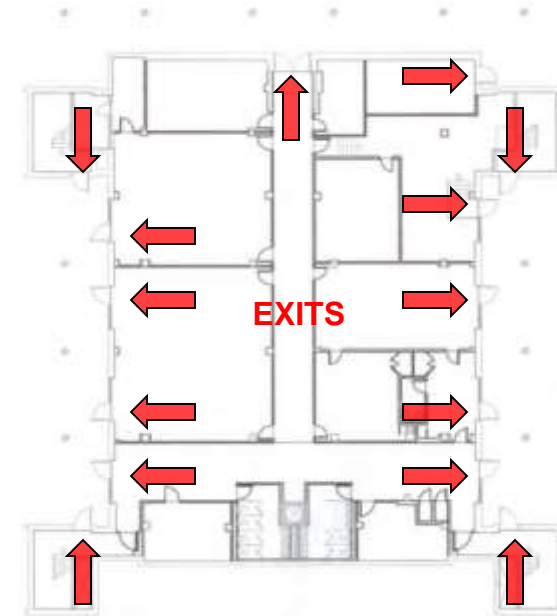
HORRMANN LIBRARY EXITS



SECOND FLOOR



FIRST FLOOR



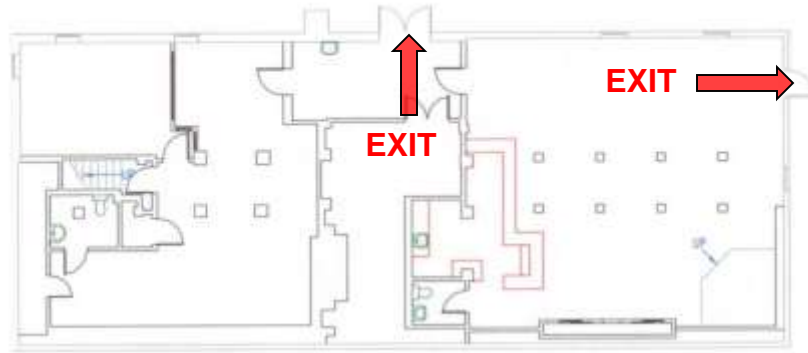
LOWER LEVEL

REYNOLDS HOUSE EVACUATION

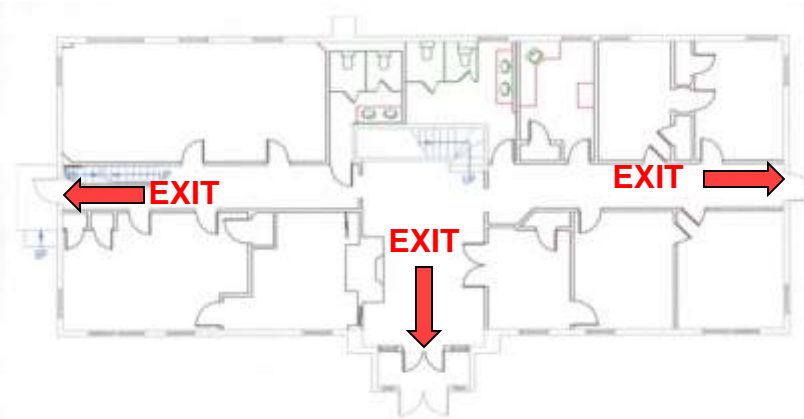


- Basement – Exit out at stairs between lobby and coffeehouse.
- Coffee House – Exit out of building through doors leading outside or emergency door at rear.
- Main Floor – Exit out building at the Main Doors, also exit door at hallway (left side) to stairway.
- Second Floor – Exit out of building using staircase leading downstairs.
- Third Floor – Exit out of building using staircase at opposite ends of hallway. May also exit building through rear fire escape windows on opposite ends of floor.

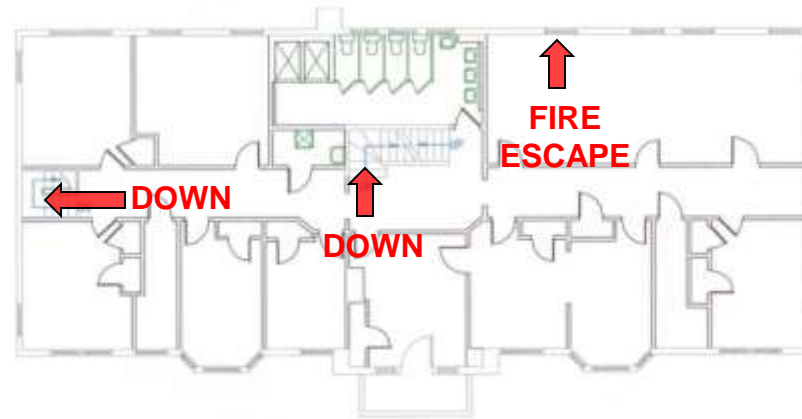
REYNOLDS HOUSE EXITS



BASEMENT



FIRST FLOOR



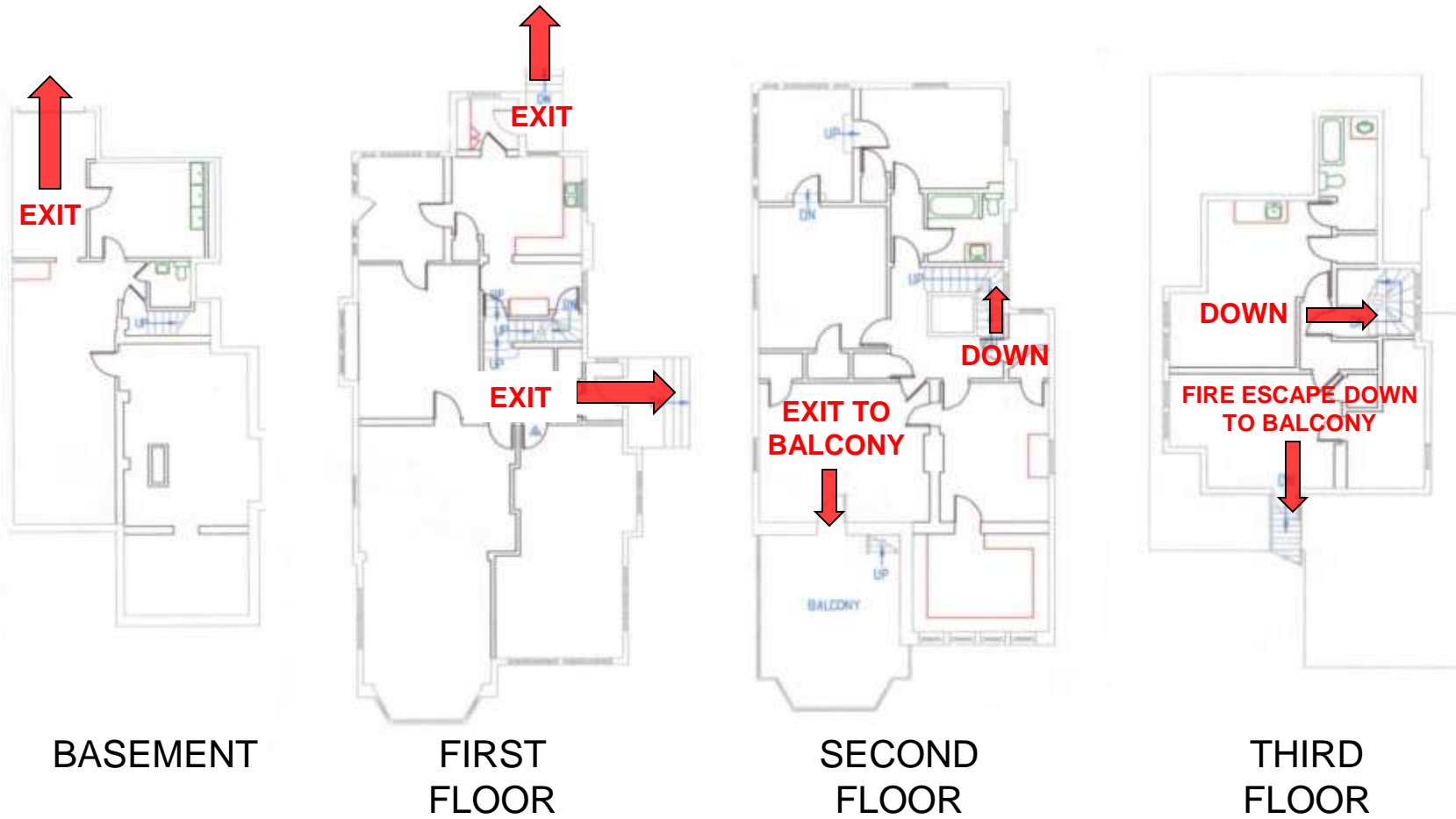
SECOND FLOOR

KAIROS HOUSE EVACUATION



- Basement – Exit out of building through garage. Manual override (pull string) will open garage door.
- First / Second Floor – Exit out of building through front door or door at rear of building, or fire escape to balcony on second floor.
- Third Floor – Exit building using stairway or fire escape down to balcony.

KAIROS HOUSE EXITS

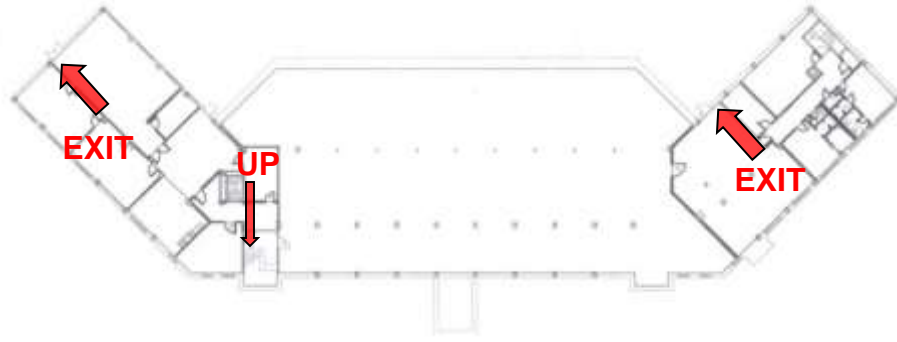


CAMPUS HALL EVACUATION

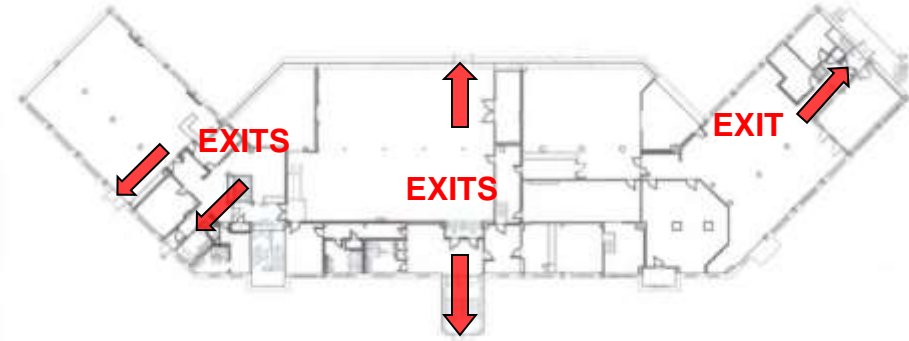


- Postal Center / Receiving – Exit building through loading dock.
- Music Performance Center – Exit building at left side exit doors and rear doors
- Early Childhood Center / Health Services – 1st Floor – Exit out of building through lobby by the elevator. Do not use elevator.
2nd Floor – Exit out through detex doors between classrooms out into lobby or exit out to stairs.
- Nursing Department – Exit through doors next to the women's room or doors by the elevator.

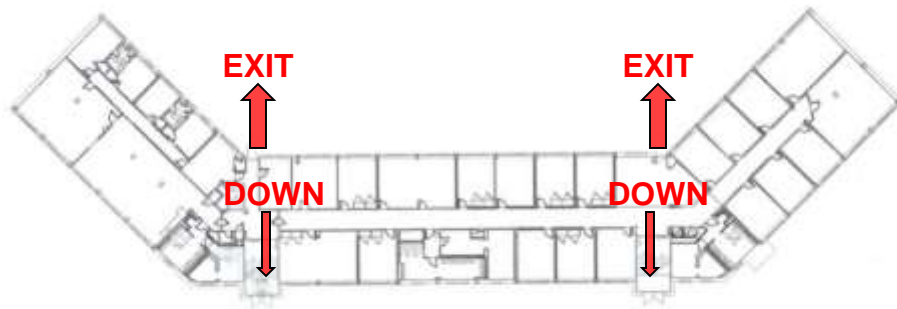
CAMPUS HALL EXITS



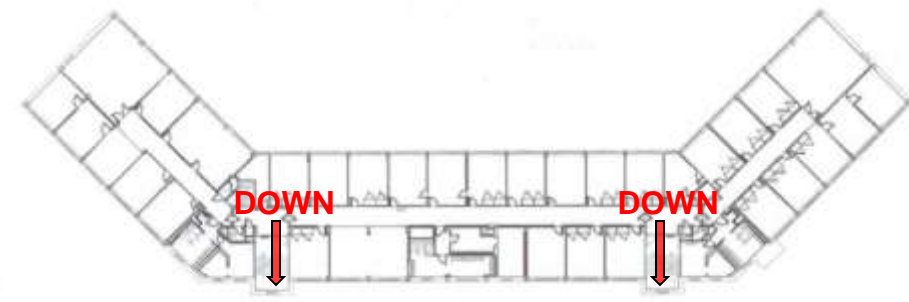
BASEMENT



GROUND FLOOR



FIRST FLOOR



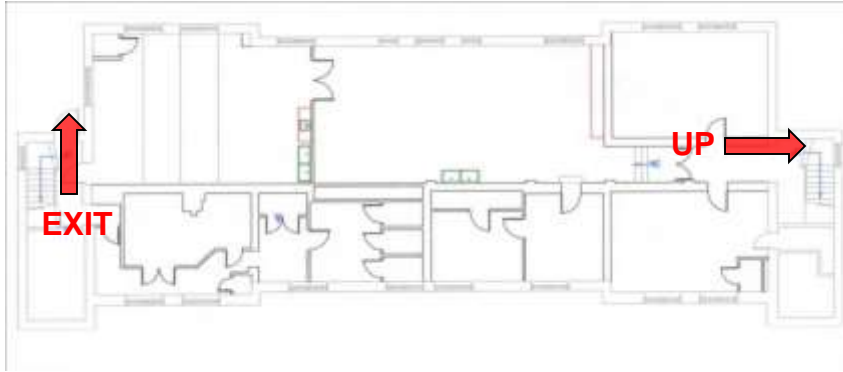
SECOND & THIRD FLOOR

PARKER HALL EVACUATION

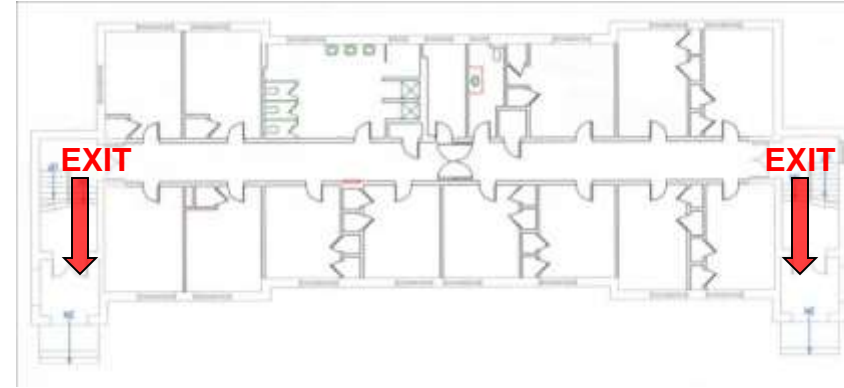


- First Floor (left side) – Exit building through door at side entrance. There are also exits located at opposite ends of hallway.
- Second Floor – Exits located at either end of hallway.
- Third Floor – Exits located at either end of hallway.

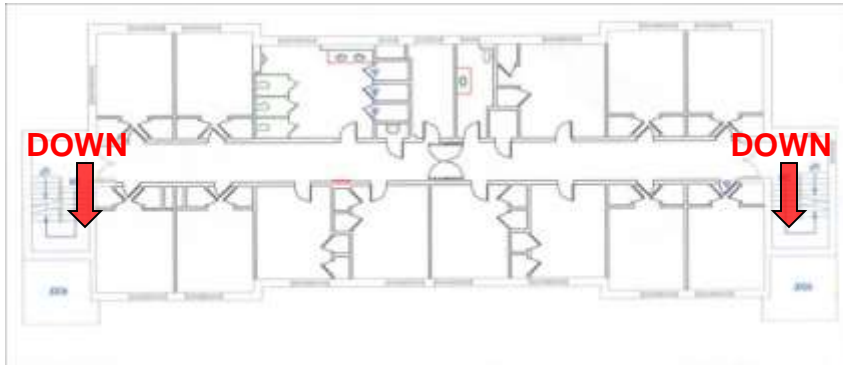
PARKER HALL EXITS



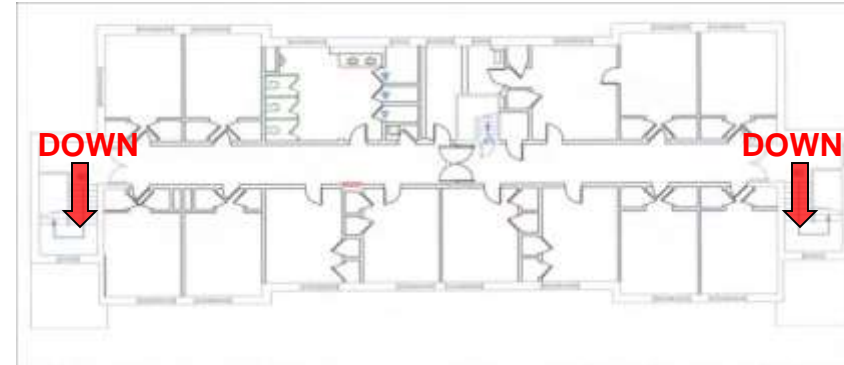
BASEMENT



FIRST FLOOR



SECOND FLOOR



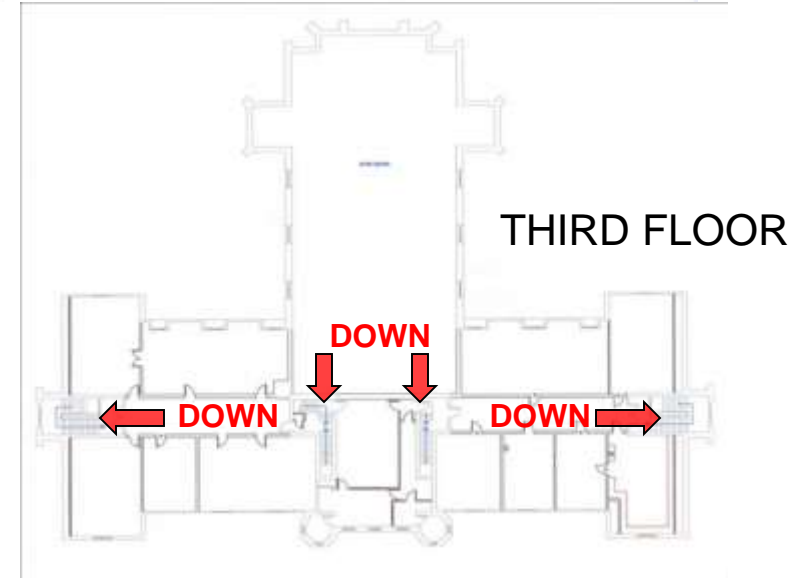
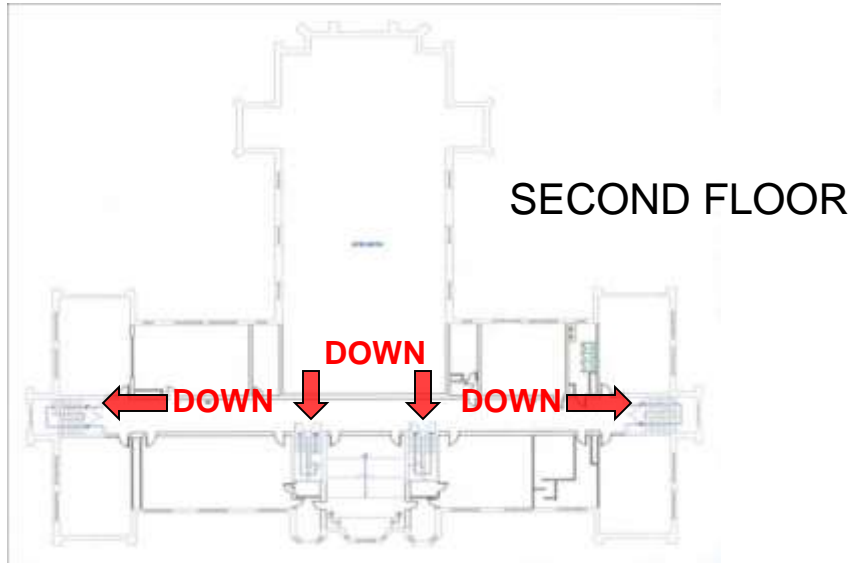
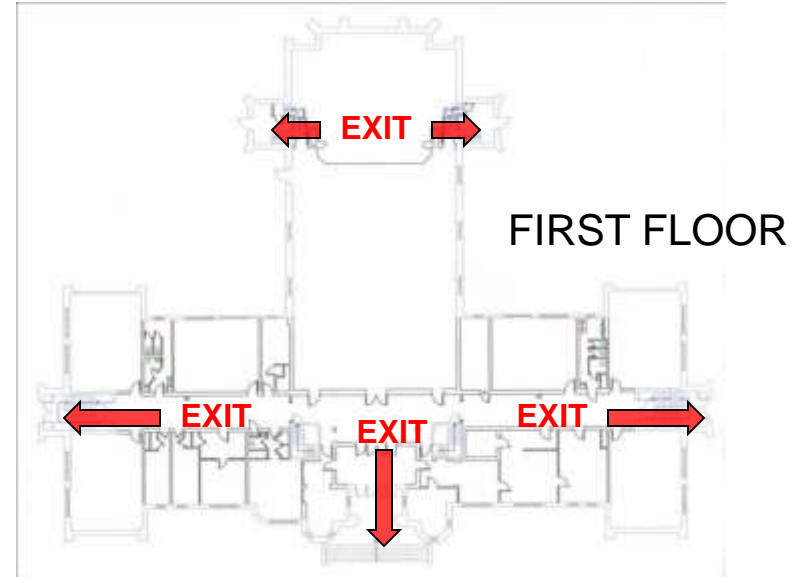
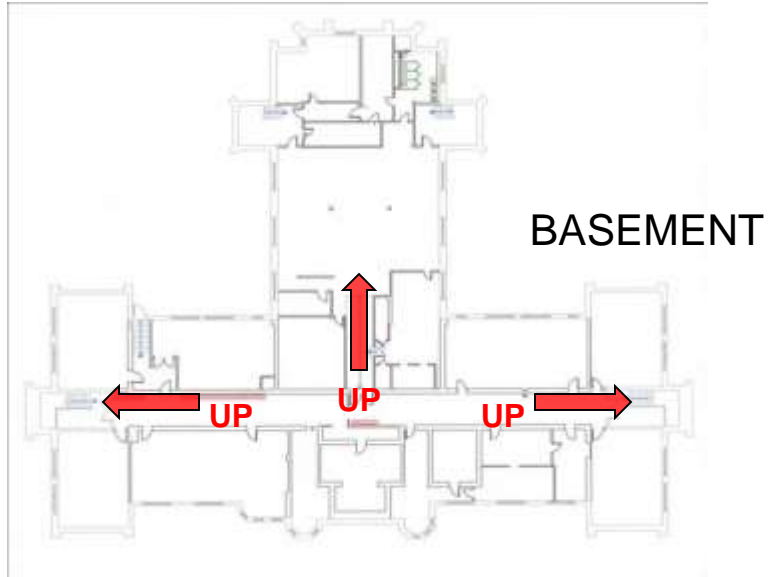
THIRD FLOOR

MAIN HALL EVACUATION



- Main Floor - Exit from main lobby through Main Entrance out to Oval, exits also located at opposite ends of hallway.
- Theater - Exits located at rear entrance to theater and at both sides of the stage.
- Second Floor - Exits located at opposite ends of hallway and the middle of the hallway.
- Basement - Exits located at opposite ends of hallway and the middle of the hallway.
- Scene Shop - Exit through doors by stairs to the shop.

MAIN HALL EXITS

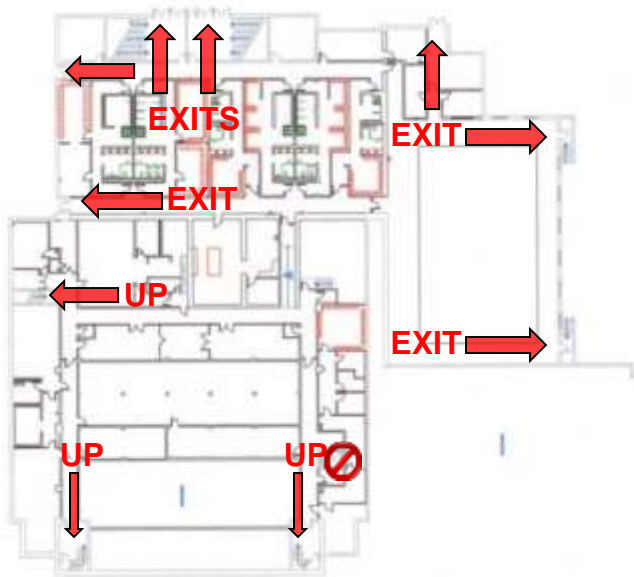


SPIRO SPORTS CENTER EVACUATION

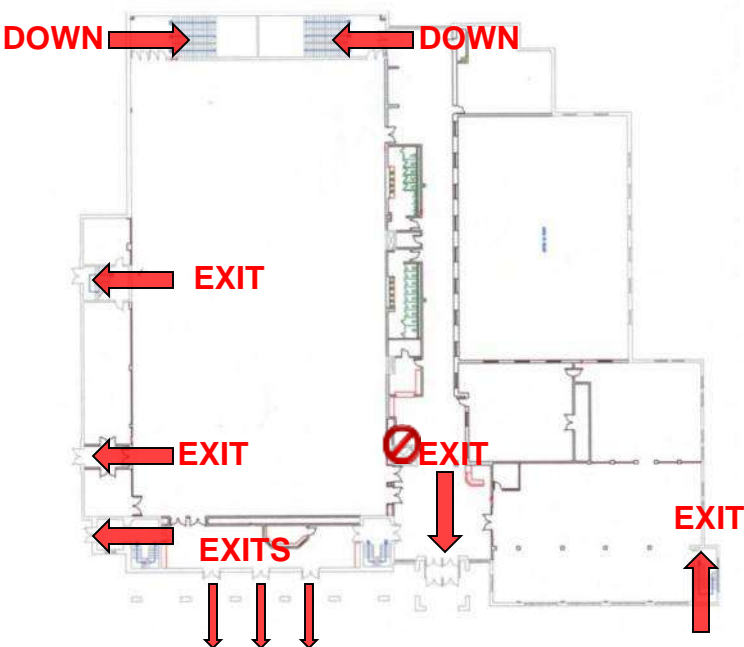


- Basement – Exits are located at either end of the pool and along the rear of building by stairs. Exit up stairs at the front of building to the first floor. Do not use elevator.
- First Floor – Exit out glass doors along front of building. Exit Fitness Center through rear exit. Exit from the basketball gym along the side of the court and by the stairs at the rear of the building.
- Second Floor – Exit down stairs by the Hall of Fame Room to the front of the building. Exit down stairs by offices directly out of building. Do not use elevator.

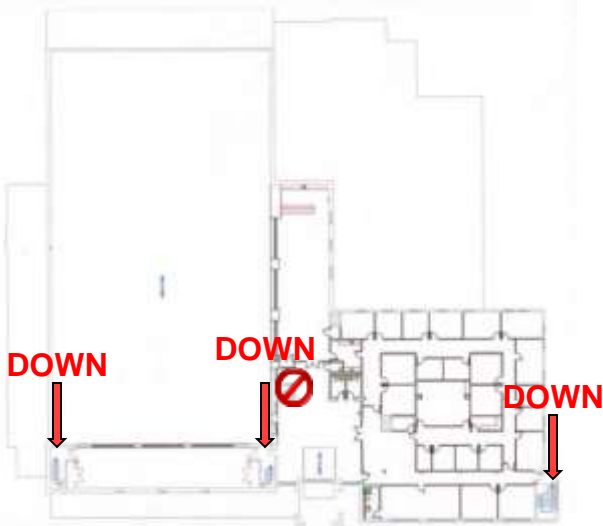
SPIRO SPORTS CENTER EXITS



BASEMENT



FIRST FLOOR



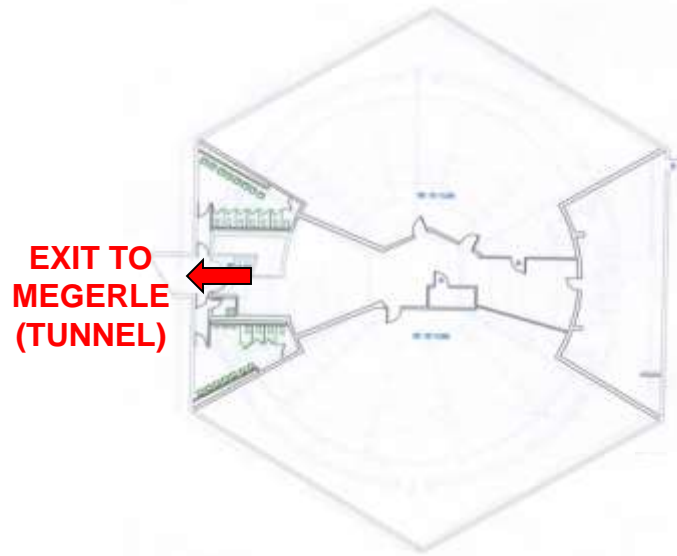
SECOND FLOOR

SPIRO HALL EVACUATION

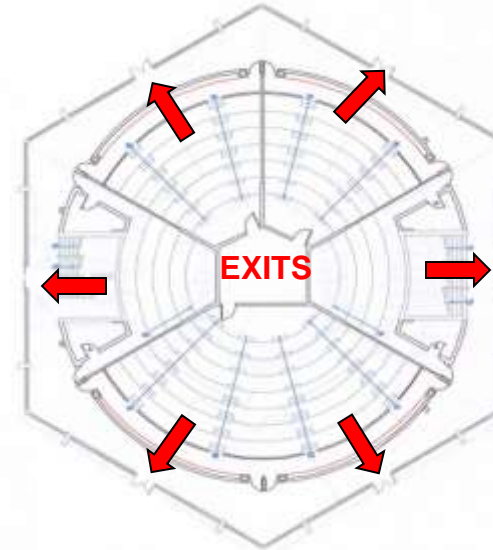


- Main Floor - Exit through doors leading out toward Main Hall or Megerle Science Building.
- Computer Lab - Exit through rear exits leading to staircases.
- Basement - Exit through rear exits leading to staircases.

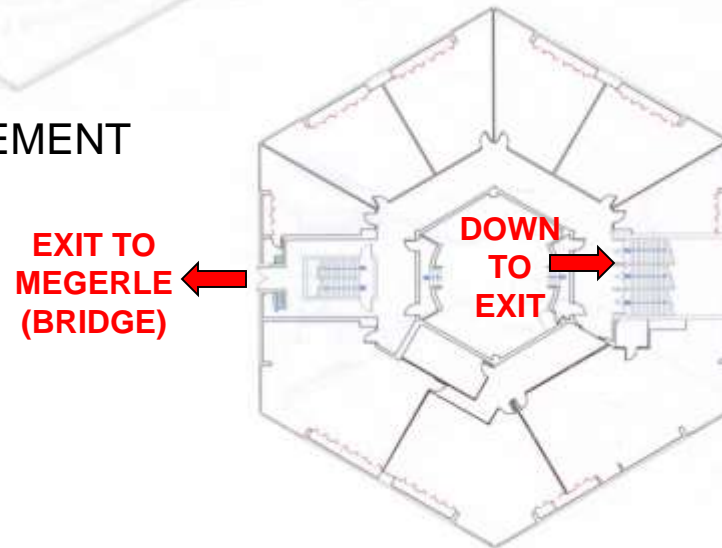
SPIRO HALL EXITS



BASEMENT



FIRST FLOOR



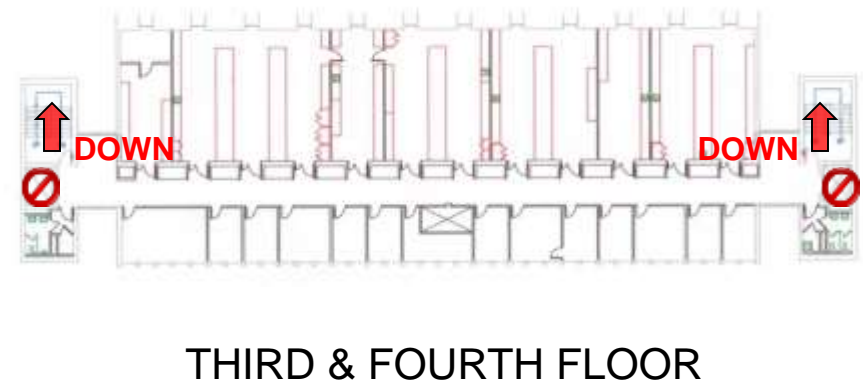
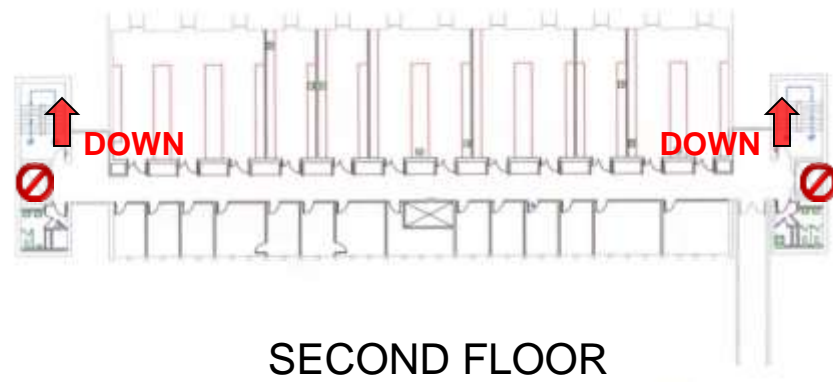
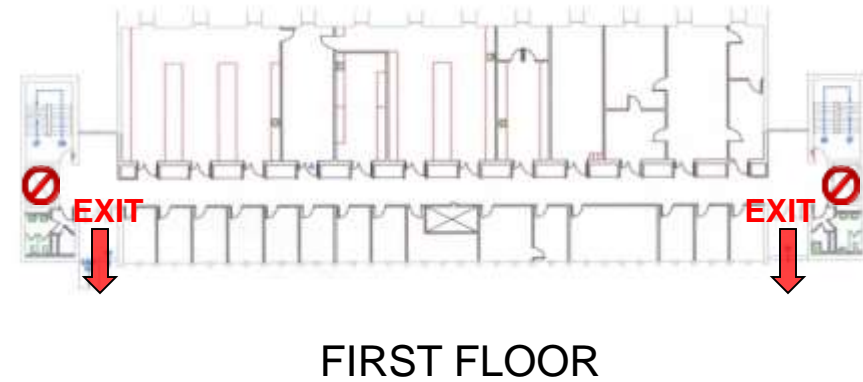
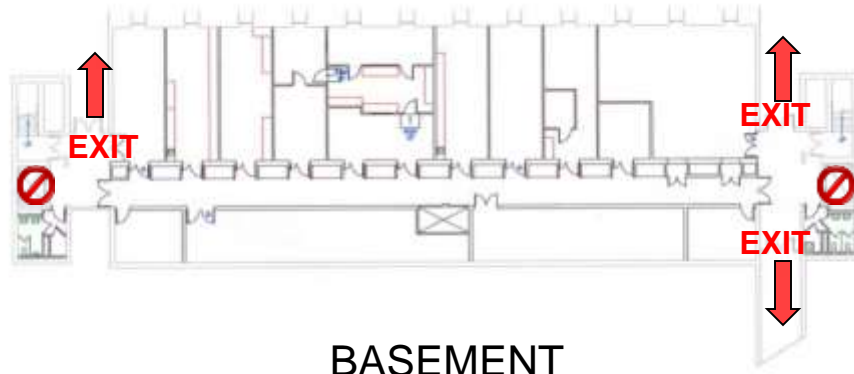
SECOND FLOOR

MEGERLE SCIENCE BUILDING EVACUATION



- Main Floor - Exits located on opposite ends of hallway.
- Second Floor - Exit through doors at either end of hallway next to the elevator.
Do not use elevators.
- Third Floor - Exit through doors at either end of hallway next to the elevator.
Do not use elevators.
- Fourth Floor - Exit through doors at either end of hallway next to the elevator.
Do not use elevators.
- Basement - Exits at the rear located at either end of the hallway to the inner lobby.

MEGERLE BUILDING EXITS

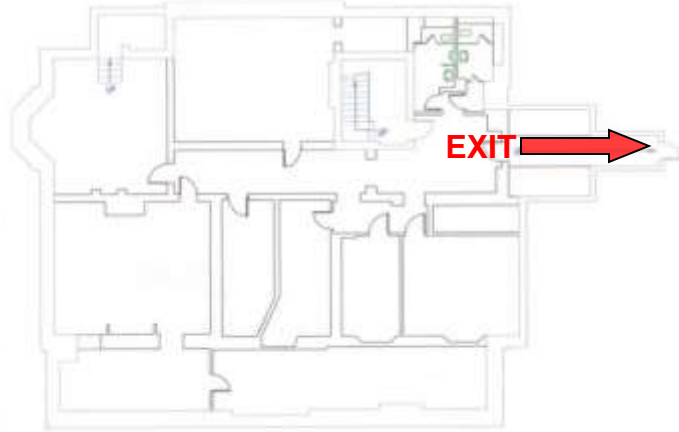


CUNARD HALL EVACUATION

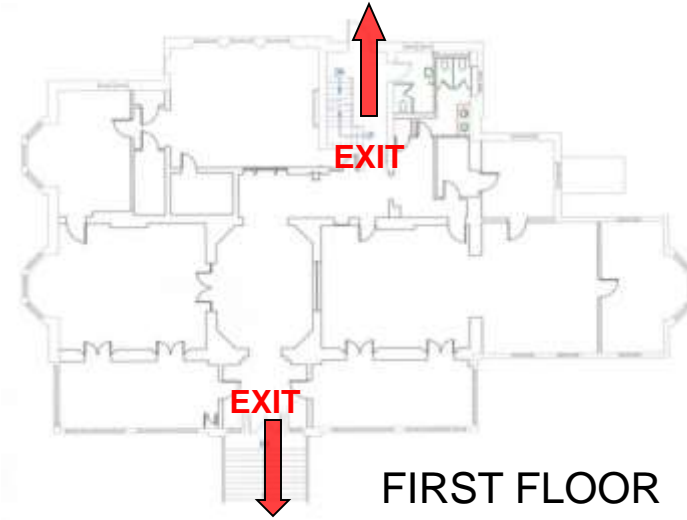


- Main Floor - Exit building at rear door by staircase.
- Second Floor - Exit down stairs to door at rear of building.
- Third Floor - Exit down stairs to Main Floor, or use fire escape at window on the right end of hallway.
- Basement Area - Exit basement through entrance door to The Wag.

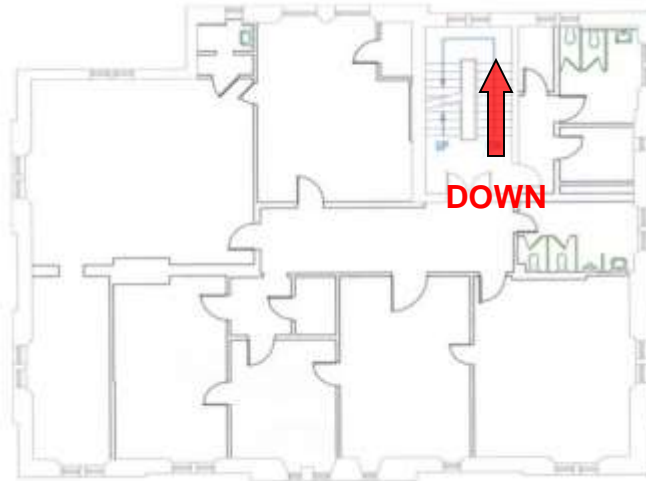
CUNARD HALL EXITS



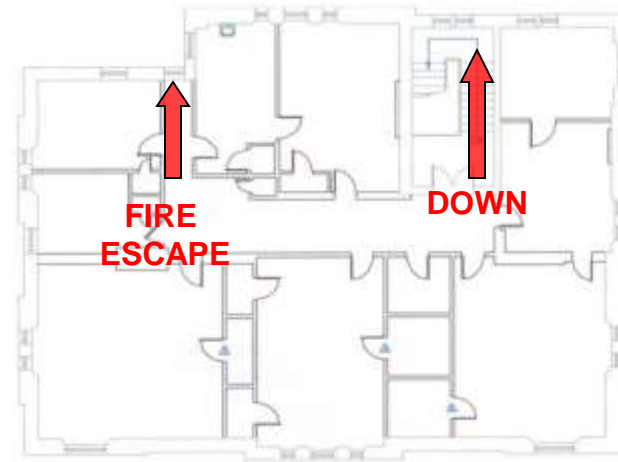
BASEMENT



FIRST FLOOR



SECOND FLOOR



THIRD FLOOR

SUMMARY

As an Building Fire Warden your MAIN responsibility is...

Directing QUICK, ORDERLY evacuation from your area

You must also...

- Grab your bullhorn, vest and hat
- Attempt to determine location of fire on your floor
- Evacuate
- Attempt to contain fire if possible or prevents escape
- Ensure mobility impaired personnel are evacuated to the nearest emergency stair and left with adequate supervision
- Remember EXACT LOCATION of [mobility impaired] personnel sheltered in stairwell
- Persons are assembled at least 100 feet from the building
- DO NOT allow anyone to reenter the building until the All Clear is given